

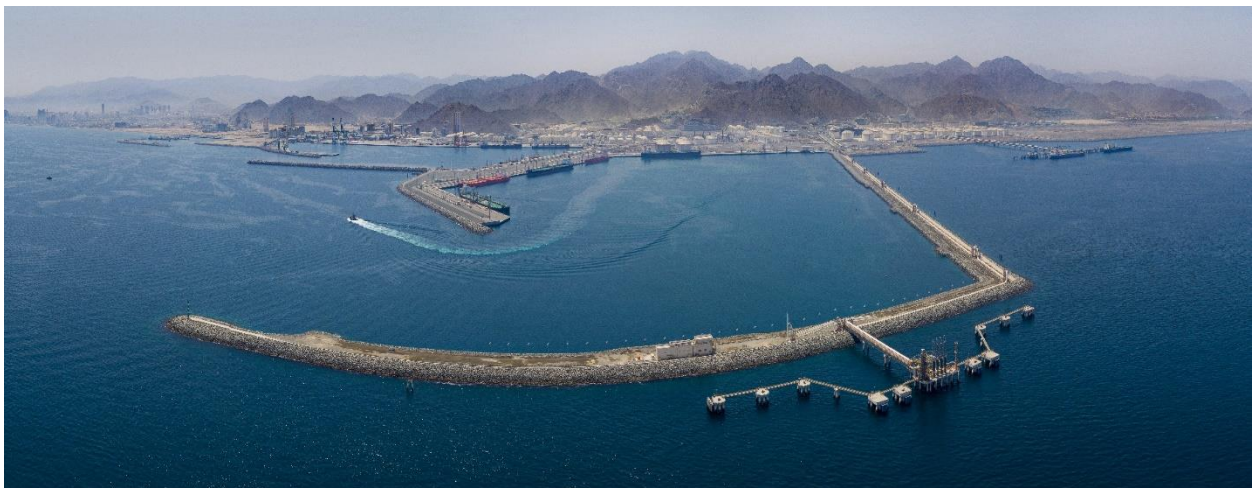
Port of Fujairah

Strategically located on the Eastern seaboard of the United Arab Emirates, approximately 70 nautical miles from the Straits of Hormuz, Fujairah is a key shipping hub for the UAE and wider region. It acts as an economic link between east and west, opening up the markets of the Indian subcontinent and East Africa to local and international goods.

Initial construction of The Port started in 1978 as part of the economic development of the UAE. Full operations commenced in 1983. Under the leadership of His Highness Sheik Saleh bin Mohammed Al Sharqi, Chairman of The Port and the Department of Industry & Economy, The Port has embarked on a continuing process of enhancement to its container, general cargo and dry & liquid bulk facilities and its comprehensive range of services. Starting from 370m quay length; today in 2023, total quay length at Port of Fujairah is more than 9.5 Km. The Port handled over 130 million tons of products in 2023 and received more than 4,800 vessels at its berths.

Under the patronage, vision and support of His Highness Sheikh Hamad bin Mohammed Al Sharqi, Member of the Supreme Council and Ruler of Fujairah, the Fujairah Oil Industrial Zone (FOIZ) and Port of Fujairah have developed the Middle East's largest commercial storage capacity for refined and crude oil. The sophisticated port infrastructure assist Gulf and International NOCs, IOCs and Global Oil Traders to expand their commercial footprint both locally and internationally. It also hosts the Abu Dhabi Crude Oil Pipeline (ADCOP) which is a strategically important facility that allows Abu Dhabi to export its premium crude oil directly to the Arabian Sea via the Emirate of Fujairah.

Oil storage in Fujairah started with a storage capacity of 550,000 cbm in 1994 and has since grown to almost 18 million cbm. Bunkering within the territorial waters of Fujairah has grown from a modest bunkering Port to one of the top three bunkering hubs in the world.



Liquid Bulk Operations

The Port of Fujairah is the Middle East's premier hub and trade location for liquid bulk cargo products, from crude oil, gasoline, diesel to bunker fuel and lube oils. Its strategic location attracts Gulf and international NOC's, IOC's and global traders. They value the state-of-the-art infrastructure, economies of scale, the wide range of independent liquid bulk storage terminals and other service providers.

Fujairah Oil Tanker Terminals (FOTT) handles The Port's liquid bulk and provides unparalleled logistical services to all the oil storage terminals, refinery and oil processing plants hosted by FOIZ. It is specifically designed and constructed to the highest safety standards, the terminal offers maximum flexibility, efficient and seamless operations.

FOTT has the flexibility to operate either 9 main berths or 14 wing berths (up to 200,000 dwt) or a combination of both. Infrastructure is in place to add an additional 12 main berths should the business need arise. Additionally The Port is also home to the first VLCC jetty on the Indian Ocean to accommodate oil tankers with maximum of 330,000 DWT. Its main purpose is to facilitate import and export of large cargoes of fuel oil and crude oil. Infrastructure is in place to add a second VLCC jetty.

The key to FOTT's success in terms of excellent vessel turnaround times and minimal waiting times lies in the innovated digital technology, large number of piggyback pipelines and two highly sophisticated Matrix Manifold Systems. These systems provide customers with full connectivity to any of the FOTT berths plus the unique option of transferring products directly between terminals without having to charter a vessel.

FOTT's global reputation as a safe, efficient and progressive vessel terminal / port and the highly skilled and experienced professionals who manage and operate the facility is what makes FOTT the regions partner of choice.



Dry Bulk Operations

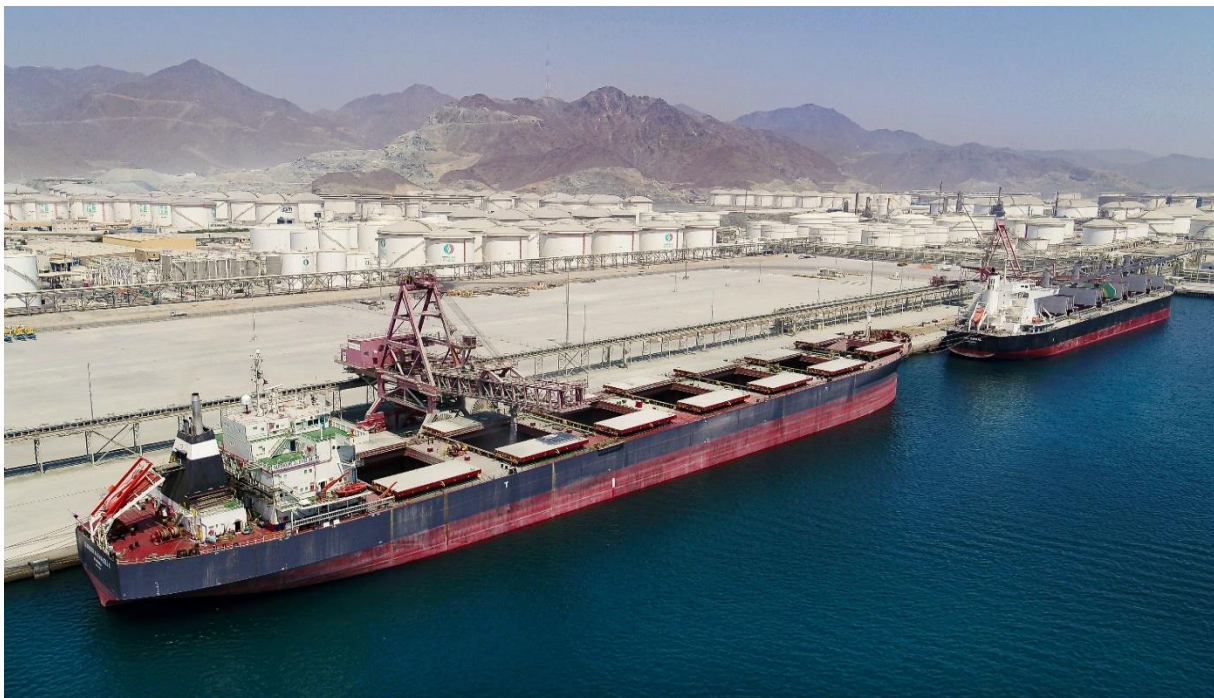
The Port's strategic location makes it the preferred location to load the Middle East's highest quality of Aggregates and Limestone. Over 20 quarries are in close proximity of The Port and a highly efficient conveyor & bulk-loader system ensures quick turnaround for vessels up to 100,000 dwt. The two bulk loaders having a combined loading capacity of 6,000 tons per hour.

The Port handles significant export volumes of Aggregate & Limestone for the GCC and Indian Subcontinent markets as well the imports of Coal, Furnace Slag and Grains. A highly skilled work force supported by a variety of up to date equipment including mobile cranes, all types of cargo slings, forklifts, trailers and MAFI's, ensures quick turn round based on 24 hour service. The Port has 5 dry bulk & General cargo berths dredged to 15 meters. Three berths are dedicated to bulk loaders.

Since 2016, Etihad Mills, a JV between Al Dahra and Loulis Mills, operates a high-tech Grain Terminal for both strategic reserves as well as for commercial purposes, handling a wide range of products such a wheat, barley and corn. Third Party storage is offered for transshipment and trading purposes.

Etihad Mills operates 20 silos in Fujairah, with a total grains storage capacity of roughly 300,000 tons. This allows for domestic and regional capabilities in grains trading and will ensure a consistent flow of grains into the region. Etihad Mills business model is based on the import of grains from North America, South America, Europe and Australia for storage and distribution across the UAE, various GCC counties, the Indian Subcontinent, East Asia and Africa.

The Grain Terminal is connected to the port via a conveyor belt system and two bulk loaders with the capacity to discharge 1,200 tons per hour and load at 600 tons per hour for vessels up to 90,000 dwt.



Containers & General Cargo

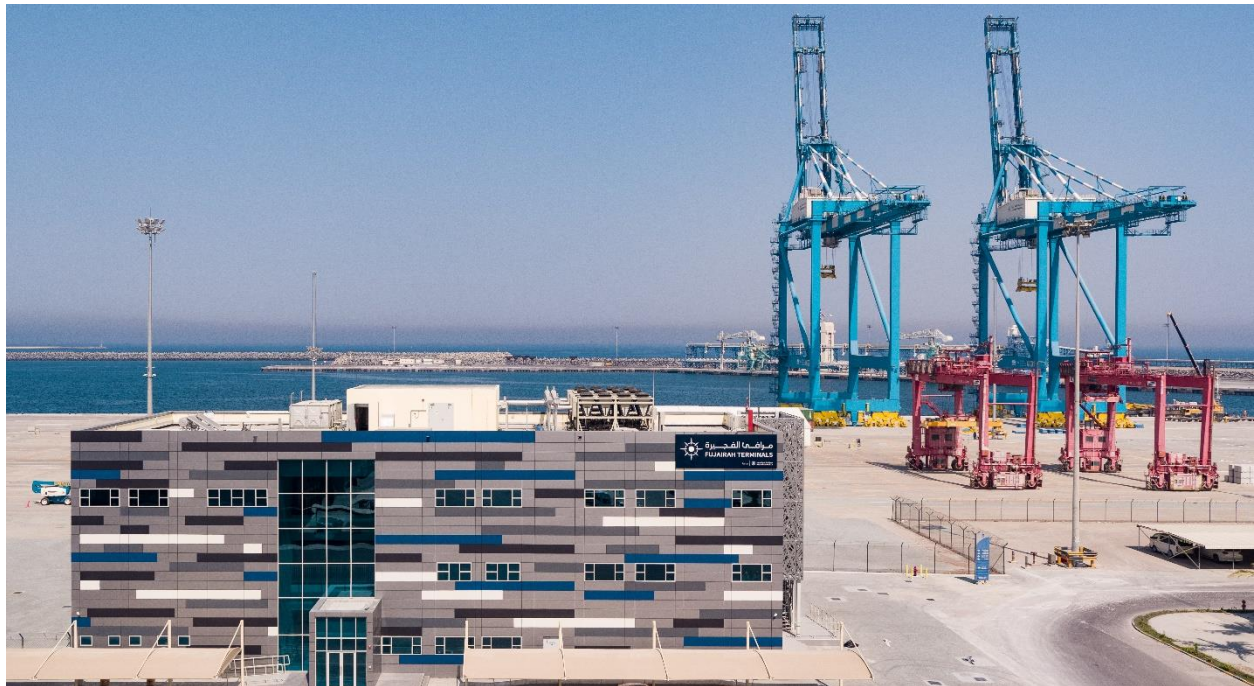
On June 2017, Abu Dhabi Ports and the Port of Fujairah signed a 35 year concession agreement. As part of the agreement, the entities have announced the establishment of “Fujairah Terminals”, a new operational arm wholly owned by Abu Dhabi Ports.

The agreement will grant Fujairah Terminals the exclusivity to enhance existing Container handling infrastructure in addition to managing all Container, General Cargo, RoRo and Cruise Ships in The Port. Berths are planned to be deepened from 15 to 18 meters to enable The Port to cater to larger vessels.

Fujairah Terminals added new and advanced equipment such as STS post panama quay cranes, RTG’s as well as new IT systems, bringing efficiency to operations and better equipping it to meet the needs of global shipping companies and service operators in line with the highest international standards.

Fujairah Terminals will serve as a hub for the entire Gulf region, East-West shipping links and an outlet for Indian subcontinent, Red Sea & East African markets.

The Container Terminal Capacity stands at 720,000 TEUs per annum and the General Cargo Yard has a capacity of 1.3 million ton per annum, further complementing services offered at Khalifa Port.



FOAA & Service Harbor

Fujairah Offshore Anchorage Area (FOAA) is globally recognized for the variety of services that are available here. Fujairah Offshore Anchorage is having up to 133 anchor positions and offers an efficient and varied “One Stop Shop” facility for calling vessels. It is known to be one of the top three Bunkering hubs in the world.

FOAA is known for its safety, security and calm waters and close to 11,500 vessels called the Anchorage in 2023, making it one of the biggest maritime service hubs in the world

In line with the strong throughput development of the Port of Fujairah in the last decade, the number of commercial vessels calling The Port and FOAA significantly increased. To facilitate further growth, the Port of Fujairah has developed a new Service Harbor dedicated for service vessels and tugboats.

The Service Harbor is a sheltered facility for maritime supply operations, such as loading of stores and spare parts, supply of electricity and fresh water, sewage service, fuel station and storage. It has the capacity to accommodate 120 different sizes service vessels and tugboats.



Dibba Bulk Handling Terminal

The deep-water area at Dibba Port is being developed into a new export terminal for mainly limestone, aggregate, clinker and will focus on the Indian Subcontinent markets. The new bulk terminal will make the export of limestone's easier as the port is just 50 km away from the quarries and will start commercial operations on 1 March 2024.

The Dibba Bulk Handling Terminal includes the following:

- Truck haulage road and stockpile area (272,000 m² / 20 plots)
- Closed conveyor belt system from stockpile area to the Terminal (4,100 meter)
- Loading via telescopic chute (cascade)
- 650 m long quay wall
- 2 Berths to handle up to 120,000 DWT ships
- 1 Bulk Loader, loading at 4,000 MT / Hr
- Foundation for 2nd conveyor belt & Bulk Loader
- 17-meter draft (alongside)
- 15.5-meter sailing draft
- Breakwater, calm and sheltered water

